

BI Q

Quick Reference

[Program GUI](#) | [Executing Analyses](#) | [Expert Mode](#)



BI Director

simplicity out of complexity

conesprit GmbH

Stuttgarter Strasse 23-1 | 74211 Leingarten

support@bi-director.com | www.bi-director.com | www.conesprit.com

Program GUI

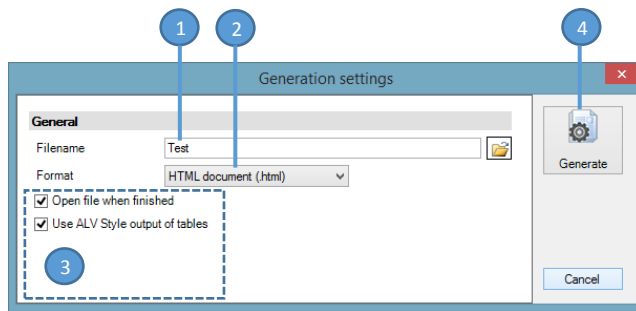
The screenshot shows the BI Q - System Meta Analysis application window. The interface is divided into several sections:

- 1 FILE Menu:** Located at the top left, containing options like Logon, Logoff, and Generate Report.
- 2 Connection:** A text box showing the current connection to 'NetWeaver 7.3 (123) [E] (amueck)'. A 'Generate Report' button is also present.
- 3 Execute:** A button to execute the analysis.
- 4 Misc.:** A button to activate Expert Mode.
- 5 Contact:** A button to contact support.
- 6 BI Director:** Buttons for Request report, BI Inspector, and BI Compendium.
- 7 Help:** A help icon in the top right corner.
- 8 Analysis tree:** A tree view on the left side listing various analysis categories such as Development, Standard, Change history, and Migration.
- 9 Analysis parameters:** A central area titled 'Modification of User' showing parameters for a report, including 'Changed by / within', 'From', and 'To' date ranges, and a table of results.

Select	Type	Technical Name	Description	System	InfoProvider	Other
<input type="checkbox"/>	Characteristic	CHA	Characteristic			
<input type="checkbox"/>	Key Figure	KYF	Key Figure			
<input type="checkbox"/>	DataStore Object	ODSO	DataStore Object			
<input type="checkbox"/>	InfoCube	CUBE	InfoCube			
<input type="checkbox"/>	InfoSet	ISET	InfoSet			
<input type="checkbox"/>	MultiProvider	MPRO	MultiProvider			
<input type="checkbox"/>	InfoSource	TRCS	InfoSource			
<input type="checkbox"/>	HybridProvider	HYBR	HybridProvider			
<input type="checkbox"/>	Semantically Partit...	LPOA	Semantically Partitioned Object			
<input type="checkbox"/>	Transformation	TRFN	Transformation			
<input type="checkbox"/>	DataSource	RSDS	DataSource			
<input type="checkbox"/>	InfoPackage	ISIP	InfoPackage			
<input type="checkbox"/>	Data Transfer Proc...	DTPA	Data Transfer Process			
<input type="checkbox"/>	Process Chain	RSPC	Process Chain			
<input type="checkbox"/>	InfoSource 3x	BW3X_ISTD	InfoSource 3.x			
<input type="checkbox"/>	DataSource 3x	BW3X_ISFS	DataSource 3.x			
<input type="checkbox"/>	Web Application ...	BTMP	Web Application Designer Template			
<input type="checkbox"/>	Query	REP_REP_70	Query			
<input type="checkbox"/>	Calculated Key Fig.	REP_CKF	Calculated Key Figure			
<input type="checkbox"/>	Workbook	REP_XLWB	Workbook			
<input type="checkbox"/>	Variable	REP_VAR	Variable			
<input type="checkbox"/>	Planning Function	PLSE	Planning Function			

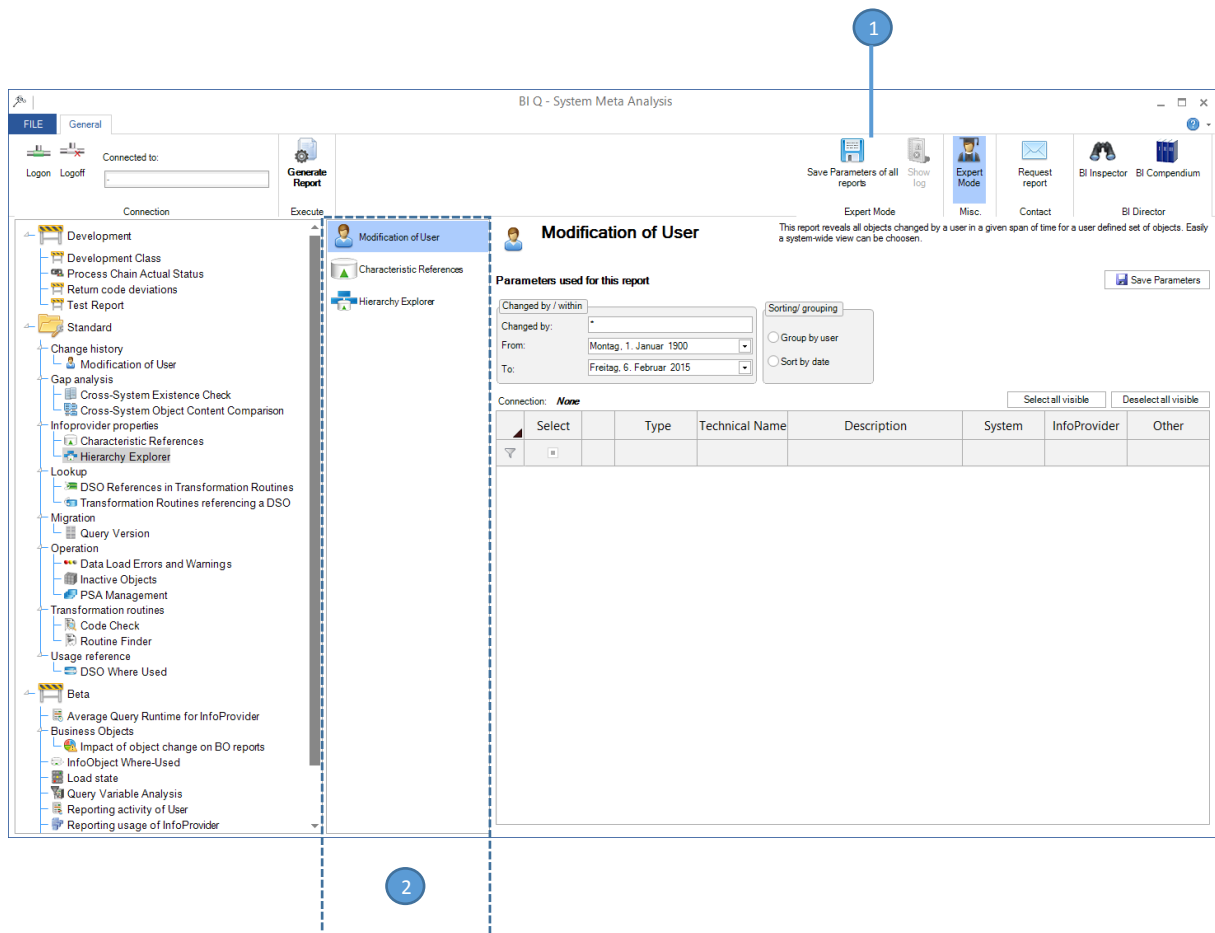
- 1) **FILE Menu:** Contains access to the program's settings.
- 2) **Connection:** Connect to a system or disconnect from a system, the connected system is shown in the text box.
- 3) **Execute:** Contains the button to execute the analysis and generate the report document.
- 4) **Misc.:** Expert mode may be activated here (allows the execution of multiple analyses at the same time).
- 5) **Contact:** Contains the buttons to contact conesprit GmbH with ideas for further analyses.
- 6) **BI Director:** Buttons to start the other applications of the BI Director patch.
- 7) **Help:** Help submenu.
- 8) **Analysis tree:** This area shows all available analyses.
- 9) **Analysis parameters:** This area is used to set all necessary parameters for the selected analysis.

Executing analyses



- 1) **Filename:** Choose the output reports filename (can also be set via a file dialog by clicking the folder button).
- 2) **File format:** Set the output file format type.
- 3) **Output options:** Choose whether to open the created file and to use ALV style output of tables for the generated document (suppressing repeated values in columns).
- 4) **Generate:** Starts the report generation process.

Expert Mode



- 1) **Expert Mode:** Contains additional options only available in Expert Mode.
- 2) **Selected Analyses:** Instead of directly selecting an analysis in the analyses tree add multiple analyses by double click or drag'n'drop to the collection of selected analyses. The parameters can be set by selecting an analysis from this control.